

DISCOVER THE SERIES PACKS



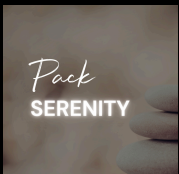
- Ozone
- Wi-Fi In.Touch 3+
- LED Waterline
- 2-year parts warranty and 1-year labor warranty



- UV + Ozone
- Wi-Fi In.Touch 3+
- LED Waterline
- 2-year parts and labor warranty



- UV + Ozone
- Wi-Fi In.Touch 3+
- Bluetooth Audio
- LED Waterline
- Acrylic color included
- 3-year parts warranty and 2-year labor warranty



- Waterlab Probe
- UV + Ozone
- Wi-Fi In.Touch 3+
- LED Waterline
- Acrylic color included
- 3-year parts and labor warranty



ABOUT US

At Be Well Canada Spa, we have been designing and manufacturing spas since 2005 with passion, innovation, and Canadian craftsmanship.

Proudly established in North America, our artisans combine cutting-edge technology and premium materials to create durable, quiet, and luxurious spas designed to enhance your everyday well-being.



Uniq

SERIES

Options*



VISIT OUR WEBSITE

here!

*See conditions depending on the model

www.spasbewell.com

NEW 2026



U903

87" x 67" x 36"
 20 Jets
 4 Seats
 120 V | GFCI 15 A
 1 Dual-Speed Pump:
 1.5 hp | 11 A / 4 A



U916

78" x 78" x 36"
 67 Jets
 6 Seats
 220/240 V | GFCI 60 A
 1 Dual-Speed Pump:
 3 hp | 12 A / 1.2 A
 1 Single-Speed Pump:
 3.5 hp | 12 A



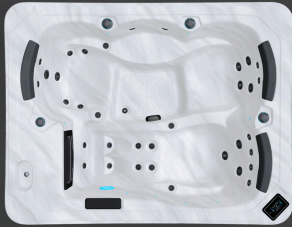
U935

89" x 89" x 38"
 68 Jets
 5 Seats
 220/240 V | GFCI 60 A
 1 Dual-Speed Pump:
 3 hp | 12 A / 1.2 A
 1 Single-Speed Pump:
 3.5 hp | 12 A



U904

87" x 67" x 36"
 35 Jets
 4 Seats
 220/240 V | GFCI 60 A
 1 Dual-Speed Pump:
 3 hp | 12 A / 1.2 A



U917

78" x 78" x 36"
 65 Jets
 7 Seats
 220/240 V | GFCI 60 A
 1 Dual-Speed Pump:
 3 hp | 12 A / 1.2 A
 1 Single-Speed Pump:
 3.5 hp | 12 A



U936

89" x 89" x 38"
 63 Jets
 6 Seats
 220/240 V | GFCI 60 A
 1 Dual-Speed Pump:
 3 hp | 12 A / 1.2 A
 1 Single-Speed Pump:
 3.5 hp | 12 A



U906

78" x 78" x 36"
 20 Jets
 6 Seats
 120 V | GFCI 15 A
 1 Dual-Speed Pump:
 1.5 hp | 11 A / 4 A



U926

84" x 84" x 38"
 72 Jets
 6 Seats
 220/240 V | GFCI 60 A
 1 Dual-Speed Pump:
 3 hp | 12 A / 1.2 A
 1 Single-Speed Pump:
 3.5 hp | 12 A



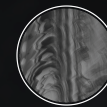
ACRYLIC**



STERLING SILVER



SMOKY MOUNTAIN



STORM CLOUDS



TUSCAN SUN



MIDNIGHT CANYON



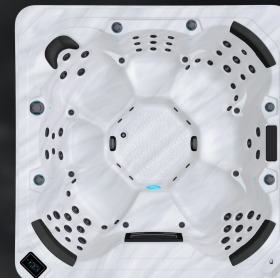
U907

78" x 78" x 36"
 22 Jets
 7 Seats
 120 V | GFCI 15 A
 1 Dual-Speed Pump:
 1.5 hp | 11 A / 4 A



U927

84" x 84" x 38"
 78 Jets
 7 Seats
 220/240 V | GFCI 60 A
 1 Dual-Speed Pump:
 3 hp | 12 A / 1.2 A
 1 Single-Speed Pump:
 3.5 hp | 12 A



CABINET



MARBLE GREY



MAHOGANY

**Additional fees